

Electronic measurement and recording of FEV₁ and PEF

The SpiroLog measures pulmonary function parameters. Measuring FEV₁ and PEF increases your insight into each patient's lung function status.

FEV₁ provides a more reliable marker than PEF when determining patient status².

Tracking pulmonary changes provides early warning signals of disease deterioration or shows visible signs of patient improvement.

Pay For Performance ●●●●●

The LifeLink system gives providers the ability to improve outcomes with **documented evidence**.

- Electronic measurement of FEV₁ and PEF provides objective lung function values and clinical outcomes.
- Data is downloaded into a secure central repository via the LifeLink Docking Station resulting in a comprehensive analysis and graphical output of patient data.
- Provider defined alerts allow for more timely intervention resulting in fewer ER visits and hospital admissions.
- Using the SpiroLog data, along with the medication compliance and technique data, create the opportunity to intervene early in order to positively impact the patient's outcome.
- Small, lightweight, operator friendly handheld design.
- Easy to read display.
- The SpiroLog information may be used to select patients for clinical studies or to customize their care plans.



A study at Children's Memorial Hospital in Chicago found that FEV₁ was a better indicator of lung function than PEF in children and adolescents presenting in the emergency department.¹

A separate study recommended "the use of FEV₁ as the gold standard for functional assessment of airway obstruction as it better reflects overall airway caliber than PEF does."²

¹ Gutglass DJ et al. Are we underestimating asthma severity? The role of peak flow meters in the emergency department, presented at the Ambulatory Pediatric Association Annual Meeting, May 1999.

² Gautrin D et al. Comparison between peak expiratory flow rates (PEFR) and FEV₁ in the monitoring of asthmatic subjects at an outpatient clinic, Chest 1994; 106(5):1419-26.

SpiroLog Data Analysis

SpiroLog PEFR/FEV1 Detail for Doe, John

Enrolled 2006-12-19 Phone (555) 888-8888 DOB 1952-02-15 Sex Male ID 0403ES8888

From 07/12/2007 to 07/25/2007

Date	PEFR	FEV1
07/12/2007 10:26:00 AM	358	2.20
03:56:00 PM	360	1.86
07/13/2007 11:12:00 AM	314	1.72
07/14/2007 08:54:00 AM	302	1.78
10:21:00 PM	314	1.70
07/15/2007 03:32:00 PM	308	1.78
07/16/2007 08:00:00 AM	314	1.78
04:17:00 PM	326	2.00
07/17/2007 07:20:00 AM	324	2.10
07/18/2007 09:06:00 AM	314	1.58
03:36:00 PM	316	2.08
07/19/2007 10:39:00 PM	330	1.86
07/20/2007 07:25:00 AM	284	1.56
07/21/2007 09:07:00 AM	272	1.62
04:23:00 PM	298	1.96
09:19:00 PM	288	1.64
07/22/2007 12:40:00 AM	288	1.60
10:15:00 AM	300	1.44
08:42:00 PM	326	1.74
07/24/2007 08:27:00 AM	284	1.68
07/25/2007 06:49:00 AM	286	1.54

days of potential data: 14 in range of 07/12/2007 thru 07/25/2007
 # days reported: 13(93%) of total days of data
 # days missing: 1
 Green 14 (66%) Yellow 7 (33%) Red 0 (0%)

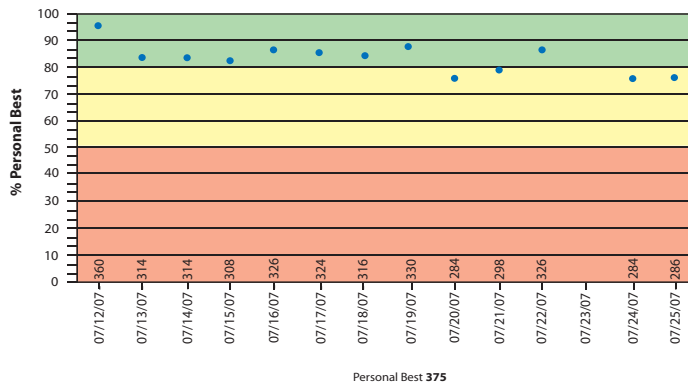
SpiroLog PEFR/FEV1 Detail Report

- Detailed event data for each spirometer blow.
- Records the best of three blows for PEFR and FEV1.
- No system used in the treatment of asthma has been able to collect data with this level of comprehensiveness and accuracy.
- Selectable range for desired dates to be displayed.

SpiroLog PEFR/FEV1 for Doe, John

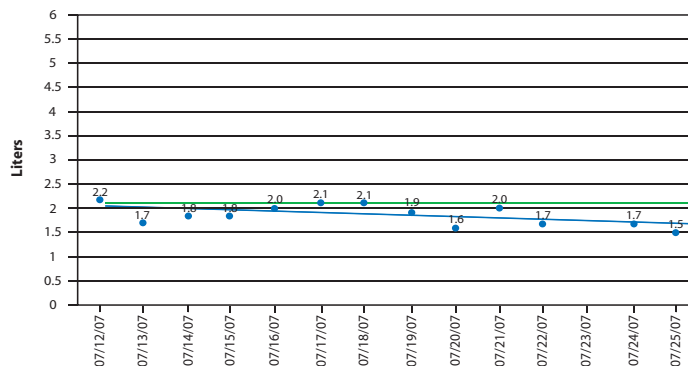
Enrolled 2006-12-19 Phone (555) 888-8888 DOB 1991-12-11 Sex Male ID 0403ES8888

From 07/12/2007 to 07/25/2007



SpiroLog PEFR/FEV1 Report

- Quickly view and assess patient's PEFR/FEV1.
- Color coded display for easy interpretation of % Personal Best effort.
- Immediately identify the need for intervention.
- Selectable range for desired dates to be displayed.
- PEFR and FEV1 reports can be independently shown.



Perdicted
Linear Trendline

days of potential data: 14 in range of 07/12/2007 thru 07/25/2007
 # days reported: 13(93%) of total days of data
 # days missing: 1
 Green 9 (69%) Yellow 4 (30%) Red 0 (0%)



5696 Peachtree Parkway
 Suite A
 Norcross, GA 30092
 phone: (770) 365-1928
 fax: (678) 992-2604